

T

O

W

N

HOUSE

atThe Kensington



In a stucco Regency terrace in the heart of chic South Kensington, the Town House at The Kensington is a rare and restful blend of deep heritage and uncluttered modern calm.

Comprising three interconnected, light-infused and classically designed drawing rooms with charming detail including a hidden whiskey bar and a curated library, the Town House is The Kensington's restaurant, private dining and event space. It is the perfect venue for intimate dinners, glamorous drinks receptions and informal meetings.

Supervised by executive Chef Steve Gibbs, formerly of Hix, the Town House also offers visitors a selection of seasonal menus throughout the day, including a classic English afternoon tea and wellness inspired smoothies by The Juicery.

Accessible via the hotel or by its own private entrance on Manson Place, the Town House embodies the ambiance of a traditional private members club with the attention to detail of a luxury hotel.



The image shows a well-lit library room. A large bay window with three panes is the focal point, featuring light-colored roller blinds and dark blue vertical accents. The room is lined with built-in grey bookshelves filled with books. In the foreground, there are two round wooden tables with contemporary chairs. One set of chairs is bright yellow, and the other is a light grey fabric. A red sofa is positioned against the bay window. A modern pendant light hangs from the ceiling. The overall atmosphere is elegant and sophisticated.

T

O

W

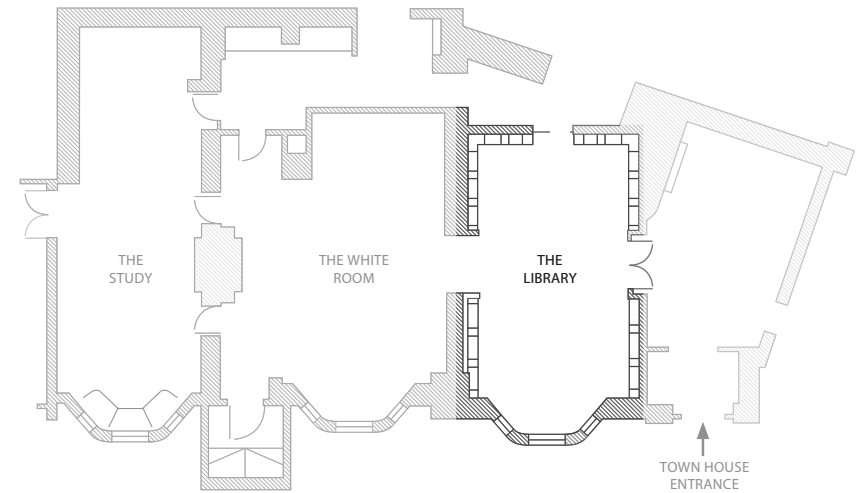
N

LIBRARY

Infused with light from a large Victorian-style bay window, lined with bookshelves and full of bright contemporary furniture, The Library is an elegant place to hold an early evening drinks reception or dinner.



THE LIBRARY



ROOM CONFIGURATION

Reception - 34 / Dining - 24

Combined with The White Room : Reception - 84 / Dining - 58

FACILITIES

Complimentary Wi-Fi

KEY FACTS

Dimensions : 8.56 m x 4.08 m / 28.1 ft x 13.5 ft

Total area : 34.9 m² / 114.6 ft²

Ceiling height : 2.9 m / 9.6 ft

Adjoining Room : The White Room

Location : Ground floor



T

O

W

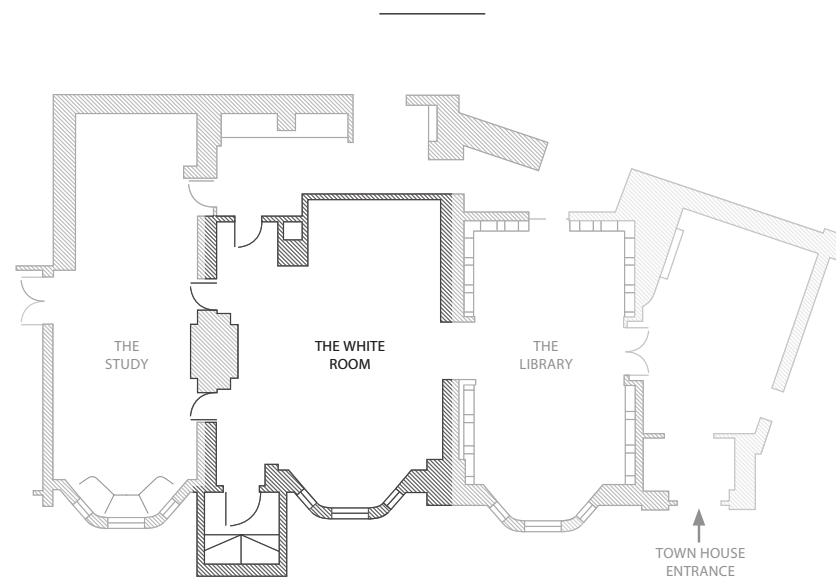
N

WHITE ROOM

The White Room is our signature space. Exquisitely proportioned, it is decorated in a classic yet contemporary style and provides a smart, informal space for meetings and dining for friends and colleagues.



THE WHITE ROOM



ROOM CONFIGURATION

Standing reception - 50 / Theatre style - 40 /
Buffet with casual seating - 40 / Dining - 34

Combined with The Library: Standing reception - 84 / Dining - 58

FACILITIES

Plasma TV screen
Complimentary Wi-Fi

KEY FACTS

Dimensions : 8.85 m x 6.5 m / 29.1 ft x 21.4 ft
Total area : 57.5 m² / 188.8 ft²
Ceiling height : 2.9 m / 9.6 ft
Adjoining Rooms : The Library and The Study
Location : Ground floor



T

O

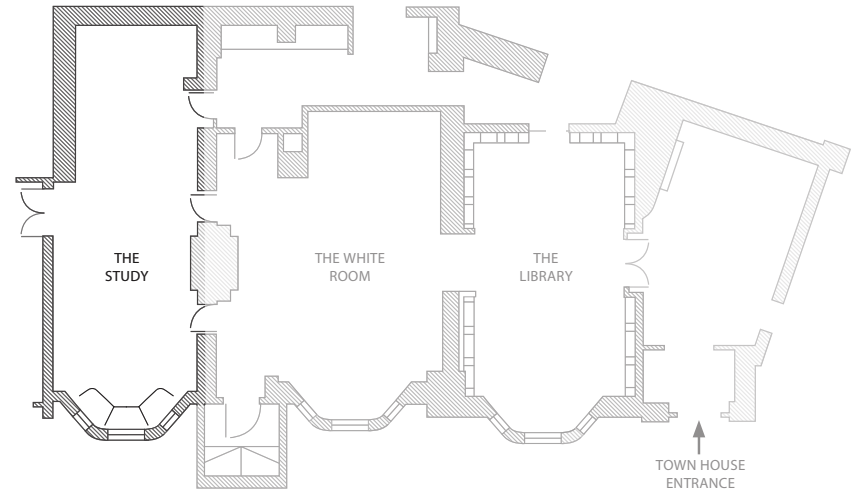
W

N

STUDY

For smaller groups, The Study accommodates private lunches and dinners, board meetings and presentations.

THE STUDY



ROOM CONFIGURATION

Standing reception - 34 / Boardroom style - 20 / Dining - 20
Film Preview - 18 / Open-end boardroom - 17

FACILITIES

ISDN connection, Projector and Screen
Complimentary Wi-Fi

KEY FACTS

Dimensions : 9.75 m x 4.1m / 31.1 ft x 13.5 ft
Total area : 39.9 m² / 130 ft²
Ceiling height : 2.9 m / 9.6 ft
Adjoining Room : The White Room
Location : Ground floor



PRIVATE DINING

Any of the rooms in the Town House can be booked individually or collectively for private dinners, buffets or cocktail and canapé events. The menus, created by executive chef Steve Gibbs, formerly of Hix and Caprice Holdings, offer a fabulous choice of fresh seasonal dishes, all of which are complemented by an expertly selected wine list.

SAMPLE MENU

Prices from £33

TO START

Heritage tomato galette
A warm open tartlet of heritage tomatoes, oak aged feta, mixed leaves and basil dressing

Crispy Creedy Carver duck salad
Roasted violet artichokes, pea shoots, Oxford BBQ sauce, cashew nuts

White asparagus
Poached white Provence asparagus with crispy lamb breast and broad beans

MAIN

Grilled marinated artichokes with smoked aubergine
Truffle marinated baby artichokes, smoked aubergine, nasturtium, seeded lentil cracker

Sea trout with Champagne butter sauce and surf clam
Slow cooked sea trout, wild fennel, heritage tomatoes and Champagne butter sauce

Roast breast of Devonshire red chicken with elderflower
Grilled free range chicken, baby spring vegetable and elderflower navarin

DESSERT

Profiteroles
Vanilla ice cream and hot chocolate sauce

Currant cheesecake
A set cheesecake with blackcurrant jelly and white currants

Coconut rice pudding
with Mango salsa

HOTEL FACILITIES

The Kensington is a Victorian-era town house hotel in one of London's most prized and luxurious locations. With 126 rooms and 24 suites, its grand stucco façade leads into an interior of classic yet contemporary sophistication. Situated at Queen's Gate at the corner of Old Brompton Road, it is close to many premier attractions including the Victoria & Albert Museum and The Royal Albert Hall, the green spaces of Kensington Gardens and Hyde Park and world-famous stores such as Harrods and Harvey Nichols.

The Kensington is part of The Doyle Collection, an Irish family-owned luxury hotel group with eight properties in the United Kingdom, United States and Ireland, all located in prime city centre locations.

LOCATION

In the heart of South Kensington, the Town House is located on The Kensington's ground floor. It is accessible via the hotel or via a private entrance on Manson Place.

OPENING HOURS

Monday - Friday 7:00am - 12:00pm
Saturday - Sunday 7:00am - 11:00pm

CONTACT

Town House at The Kensington,
109 113 Queen's Gate,
London SW7 5LR
T +44 (0) 207 589 6300
✉ townhouse@doylecollection.com

DOYLE COLLECTION

LONDON
WASHINGTON DC
DUBLIN
CORK
BRISTOL

Town House ^{at} The Kensington

109 113 Queen's Gate, South Kensington, London, SW7 5LR
townhousekensington.com