



Open for business...

Your perfect business venue in the heart of Chelsea



Beaufort House



Beaufort House

The perfect corporate meeting & event venue in the heart of Chelsea



Beaufort House Chelsea offers more than just a meeting space with four walls.

~

Open 7 days a week, we provide flexible meeting spaces for board meetings, training days, presentations, brainstorming away-days and any other corporate event.

~

Organisers can tailor any event from a small meeting for 10 to a conference for 100 guests.

~

We also offer complimentary stationary, as well as audio-visual equipment and plasma screens upon request.

~

All our rooms are beautifully decorated with natural daylight and blackout blinds for screenings.

~

Appropriate audio-visual equipment can be provided in all our rooms.

~

Our rooms are available by the day or the hour.





Classroom style



Boardroom style



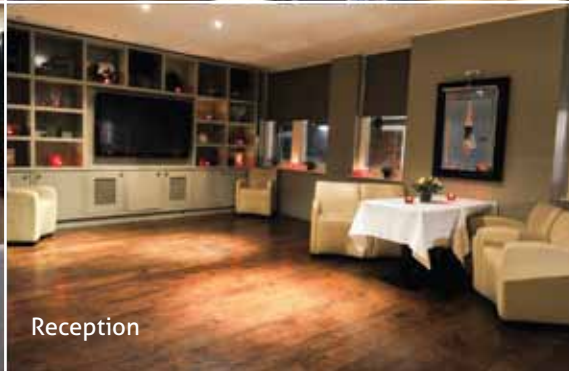
Lunch/Dinner



Theatre style



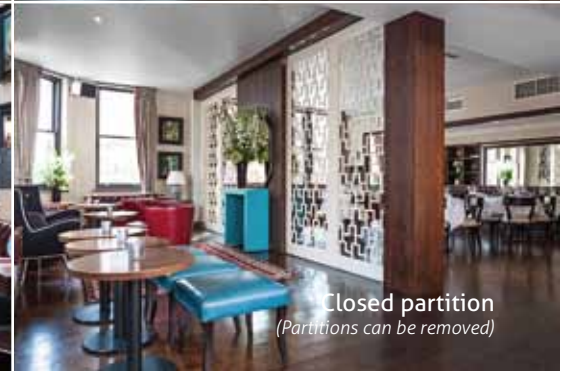
Theatre style



Reception



Bar area



Closed partition
(Partitions can be removed)

CLUB ROOM

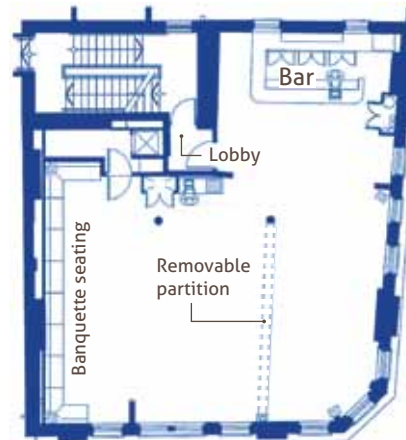
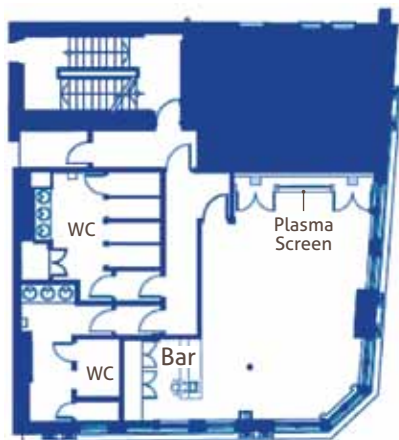
Capacity:

- Theatre - 30
- Classroom - 20
- Boardroom - 26
- U-Shape - 20
- Cabaret - 24
- Lunch/Dinner - 26
- Reception - 60

Dimensions:

- Length - 8.0m
- Width - 5.5m
- Area - 42.5m²
- Height - 2.7m
- Door Height - 2.0m
- Door Width - 0.8m

Please refer to room specifications page for full details.



MEMBERS LOUNGE

Capacity:

- Theatre - 60
- Classroom - 50
- Boardroom - 28
- U-Shape - 40
- Cabaret - 60
- Lunch/Dinner - 100
- Dinner Dance - 60
- Reception - 180

Dimensions:

- Length - 12.1m
- Width - 11.2m
- Height (max) - 3.0m
- Height (min) - 2.5m
- Door Height - 2.0m
- Door Width - 0.8m

Please refer to room specifications page for full details.





Private Dinners



Cabaret



Reception



Dinner/Dance

CHAMPAGNE BAR

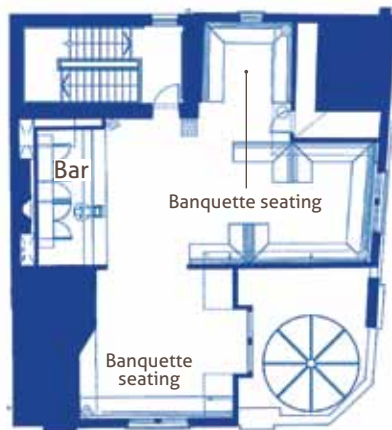
Capacity:

Theatre - 20
 Classroom - 20
 Boardroom - 16
 Cabaret - 30
 Lunch/Dinner - 50
 Dinner Dance - 30
 Reception - 120

Dimensions:

Length - 10.0m
 Width - 12.0m
 Height (max) - 4.0m
 Height (min) - 2.6m
 Door Height - 2.1m
 Door Width - 0.8m

Please refer to room specifications page for full details.



What we offer



Complimentary Wi-Fi

~

Conference call speaker phone (Polycom)

~

Large plasma screen with appropriate audio-visual cables

~

Flipchart/whiteboard & pens

~

Lectern

~

Microphone/PA system

~

Water, tea, coffee, fruit bowl and sweetsies

~

Dedicated member of staff

~

Should you require additional audio-visual equipment, our dedicated events team will be able to source this for you with our preferred supplier.



Coffee & pastries



Light lunches



Cocktails



Canapés

Food & Drink



We know that meetings and conferences tend to last most of the day, so food plays a huge role in keeping your guests engaged and alert.

~

Our culinary team can design and create menus for your event paying close attention to taste, quality and nutrition.

~

So whether you're hoping for breakfast pastries, a lunchtime break or food for guests to graze while networking, we have a wide range of options for you to choose from.

~

We also serve a mean cocktail to help you unwind at the end of the day!

A stress-free experience



At the heart of everything we do is with you, the client, in mind.

Our dedicated events team will work with you to ensure your meeting or event is a great success and you have everything you need.

~

No request is too big nor too small; we aim to make your event run as smoothly as possible.

~

We will ensure you have one central point of contact

to handle all your room set up and logistics from the moment your initial enquiry is processed through to the conclusion of the event.

You will have one manager who will act as your point of contact on the day of your event, handling all food, beverage and audio-visual requirements.

~

Satisfying our guests' needs and making them feel at home is our number one priority.

Aside from the fabulous meeting space, the delicious food and limitless sweets, it's the reason our guests keep coming back again and again.

~

We want you to relax and enjoy yourself from the moment you step through the door.

We understand just how important it is to come into a space where all you have to worry about is having a fantastic, fun and productive day.

~

To truly experience our amazing service and space you'll have to come and see for yourselves.

Feel free to book in for a show-round and we'll treat you to some fresh coffee or a glass of bubbles.

Room Specifications



Room Name	Members Lounge	The Club Room	Champagne Bar
Floor	1	2	3
Lift to floor	No	No	No
Capacity			
Theatre	60	30	20
Classroom	50	20	20
Boardroom	28	26	16
U-Shape	40	20	~
Cabaret	60	24	30
Lunch/Dinner	100	26	50
Dinner Dance	60	~	30
Reception	180	60	120
Dimensions			
Length	12.1m	8.0m	10.0m
Width	11.2m	5.5m	12.0m
Area	~	42.5m ²	~
Height (max)	3.0m	2.7m	4.0m
Height (min)	2.5m	2.7m	2.6m
Door Height	2.0m	2.0m	2.1m
Door Width	0.8m	0.8m	0.8m
Lighting			
Tungsten	No	No	No
Fluorescent	No	No	No
Halogen	Yes	Yes	Yes
Dimmers	Yes	Yes	Yes
Controls in Room	Yes	Yes	Yes
Blackout	No	Yes	Yes
Windows	Yes	Yes	Yes
Facilities			
Sound System Fitted	Yes	Yes	Yes
Air Conditioning	Yes	Yes	Yes
3-Phase Available	No	No	No
No of 13 amp Sockets	8	14	16
Telephone Points	3	2	4

Further Information



To book your Corporate Event please contact us on 020 7352 2828 and speak to a member of our events team to discuss your requirements in more detail or email us at info@beauforthousechelsea.com

Directors: *Louis Hysa & Simon Oldham*
Event Manager: *Hannah Cary*
Event Manager: *Augusta McGaw*
Marketing Enquiries: *Emma Dixon*



Opening Times:

COCKTAIL BAR AND BRASSERIE

Monday to Wednesday 8.00am · 12:30am

Thursday & Friday 8.00am · 1:30am

Saturday 9.00am · 1.30am

Sunday 9.00am · 12.30am

PRIVATE MEMBERS CLUB

Monday & Tuesday 8.00am · 1:30am

Wednesday & Thursday 8.00am · 2:30am

Friday 8.00am · 3:30am

Saturday 9.00am · 3.30am

Sunday 9.00am · 1.30am

PUBLIC TRANSPORT:

Tube: *Sloane Square or South Kensington (both 15 minutes by foot)*

Bus: *11, 19, 22, 49, 319, 345, all stop outside Beaufort House Chelsea*

How to find us: *Beaufort House is located on the corner of the Kings Road & Beaufort Street, close to Battersea Bridge*

Beaufort House Chelsea 354 Kings Road LONDON SW3 5UZ
020 7352 2828 info@beauforthousechelsea.com beauforthousechelsea.com

 [BeaufortHouseLondon](https://www.facebook.com/BeaufortHouseLondon)  [@Beauforthouse](https://twitter.com/Beauforthouse)  [Beauforthousechelsea](https://www.instagram.com/Beauforthousechelsea)