



*Reunite with us ...*



*Beaufort House*

The perfect School Reunion & Alumni Event venue in the heart of Chelsea



## Beaufort House

*The perfect school reunion & alumni event venue in the heart of Chelsea*



Beaufort House Chelsea offers more than just an event space with four walls.

~

Open 7 days a week, we provide flexible spaces for a variety of needs and capacities.

~

Organisers can tailor any event from a small private dinner for 10-30 people to a large scale social gathering up to 300 guests with drinks & canapés.

~

Appropriate audio-visual equipment can be provided in every room on request.

~

All our rooms are beautifully decorated with natural daylight and blackout blinds for screenings.

~

Often great memories from school would like to be shared, therefore we have a built in PA system for speakers and we can provide plasma screens and/or projector screens upon request.





Private Lunch/Dinner



Boardroom style



Private Lunch/Dinner



Theatre style



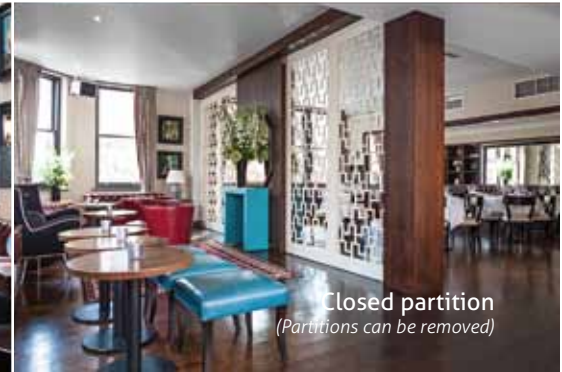
Theatre style



Reception



Bar area



Closed partition  
(Partitions can be removed)

## CLUB ROOM

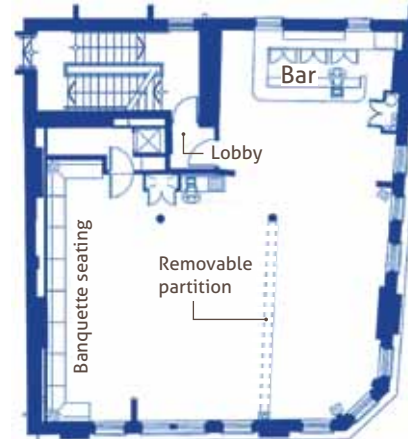
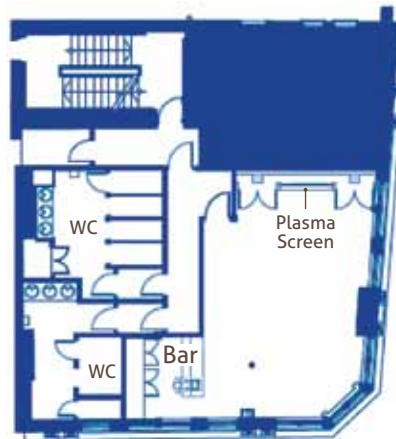
### Capacity:

- Theatre - 30
- Classroom - 20
- Boardroom - 26
- U-Shape - 20
- Cabaret - 24
- Lunch/Dinner - 26
- Reception - 60

### Dimensions:

- Length - 8.0m
- Width - 5.5m
- Area - 42.5m<sup>2</sup>
- Height - 2.7m
- Door Height - 2.0m
- Door Width - 0.8m

Please refer to room specifications page for full details.



## MEMBERS LOUNGE

### Capacity:

- Theatre - 60
- Classroom - 50
- Boardroom - 28
- U-Shape - 40
- Cabaret - 60
- Lunch/Dinner - 100
- Dinner Dance - 60
- Reception - 180

### Dimensions:

- Length - 12.1m
- Width - 11.2m
- Height (max) - 3.0m
- Height (min) - 2.5m
- Door Height - 2.0m
- Door Width - 0.8m

Please refer to room specifications page for full details.





Private Dinners



Private Bar



Drinks Reception



Dinner/Dance

## CHAMPAGNE BAR

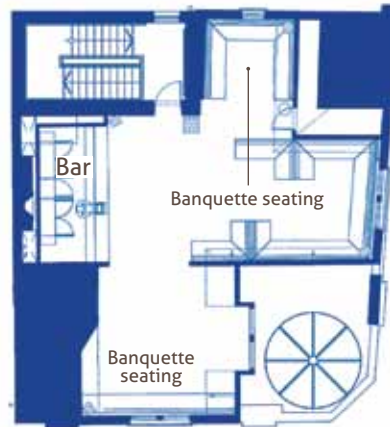
### Capacity:

Theatre - 20  
Classroom - 20  
Boardroom - 16  
Cabaret - 30  
Lunch/Dinner - 50  
Dinner Dance - 30  
Reception - 120

### Dimensions:

Length - 10.0m  
Width - 12.0m  
Height (max) - 4.0m  
Height (min) - 2.6m  
Door Height - 2.1m  
Door Width - 0.8m

Please refer to room specifications page for full details.



## What we offer

Stylish, versatile event space located over 4 floors  
(all with natural daylight)

~

Complimentary Wi-Fi

~

Microphone/PA system

~

Dedicated event staff

~

DJ can be arranged at an extra cost

~

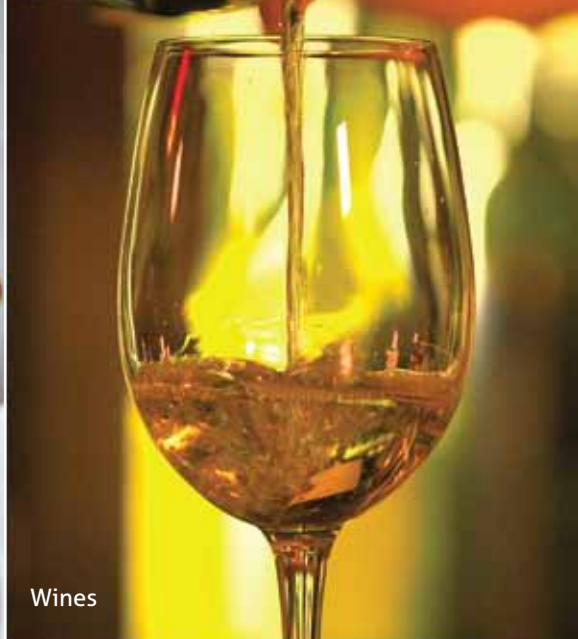
Live music/band can be arranged at an extra cost







Buffet



Wines



## *Food & Drink*

We know that when gathering people together after a long time apart, quality food and drink is vital to make this experience the best it can be.

~

Our culinary team will work with you to design the perfect food and drinks menu for your event, paying close attention to taste, quality and nutrition.

~

So whether you're planning a private dinner for 25 people, a sit down lunch buffet for 85 people, or drinks & canapés reception for up to 300 people, we can arrange it for you.



Cocktails



Canapés





## *A stress-free experience*

At the heart of everything we do is with you, the client, in mind.

Our dedicated events team will work with you to ensure your event is a great success and you have everything you need.

~

No request is too big nor too small; we aim to make your event run as smoothly as possible.

~

We will ensure you have one central point of contact

to handle all your room set up and logistics from the moment your initial enquiry is processed through to the conclusion of the event.

You will have one manager who will act as your point of contact on the day of your event, handling all food, beverage and audio-visual requirements.

~

Satisfying our guests' needs and making them feel at home is our number one priority.

Aside from the fabulous space, the delicious food and drinks, it's the reason our guests keep coming back again and again.

~

We want you to relax and enjoy yourself from the moment you step through the door. We understand just how important it is to come to a venue where all you have to worry about is having a fantastic, fun and successful event.

~

To truly experience our amazing service and space please come and see for yourselves.

Book in for a show-round with one of our Events Team and we'll treat you to some fresh coffee or a glass of bubbles.



## *Room Specifications*



Room Name	Members Lounge	The Club Room	Champagne Bar
Floor	1	2	3
Lift to floor	No	No	No
Capacity			
Theatre	60	30	20
Classroom	50	20	20
Boardroom	28	26	16
U-Shape	40	20	~
Cabaret	60	24	30
Lunch/Dinner	100	26	50
Dinner Dance	60	~	30
Reception	180	60	120
Dimensions			
Length	12.1m	8.0m	10.0m
Width	11.2m	5.5m	12.0m
Area	~	42.5m <sup>2</sup>	~
Height (max)	3.0m	2.7m	4.0m
Height (min)	2.5m	2.7m	2.6m
Door Height	2.0m	2.0m	2.1m
Door Width	0.8m	0.8m	0.8m
Lighting			
Tungsten	No	No	No
Fluorescent	No	No	No
Halogen	Yes	Yes	Yes
Dimmers	Yes	Yes	Yes
Controls in Room	Yes	Yes	Yes
Blackout	No	Yes	Yes
Windows	Yes	Yes	Yes
Facilities			
Sound System Fitted	Yes	Yes	Yes
Air Conditioning	Yes	Yes	Yes
3-Phase Available	No	No	No
No of 13 amp Sockets	8	14	16
Telephone Points	3	2	4





## *Further Information*

To book your Alumni Event or School Reunion  
please contact our Marketing Manager Jimmy Scott on 07554 427163  
or email him at [marketing@beauforthousechelsea.com](mailto:marketing@beauforthousechelsea.com)

---

### Opening Times:

#### **COCKTAIL BAR AND BRASSERIE**

*Monday to Wednesday 8.00am · 12:30am*

*Thursday & Friday 8.00am · 1:30am*

*Saturday 9.00am · 1.30am*

*Sunday 9.00am · 12.30am*

#### **PRIVATE MEMBERS CLUB**

*Monday & Tuesday 8.00am · 1:30am*

*Wednesday & Thursday 8.00am · 2:30am*

*Friday 8.00am · 3:30am*

*Saturday 9.00am · 3.30am*

*Sunday 9.00am · 1.30am*

### **PUBLIC TRANSPORT:**

**Tube:** *Sloane Square or South Kensington (both 15 minutes by foot)*

**Bus:** *11, 19, 22, 49, 319, 345, all stop outside Beaufort House Chelsea*

**How to find us:** *Beaufort House is located  
on the corner of the Kings Road & Beaufort Street, close to Battersea Bridge*



---

**Beaufort House Chelsea** 354 Kings Road LONDON SW3 5UZ  
020 7352 2828 [info@beauforthousechelsea.com](mailto:info@beauforthousechelsea.com) [beauforthousechelsea.com](http://beauforthousechelsea.com)



BeaufortHouseLondon



@Beauforthouse



Beauforthousechelsea